

# 01 - Muxia - Dumbrià - Walking

---

**Total length** 22.6 km

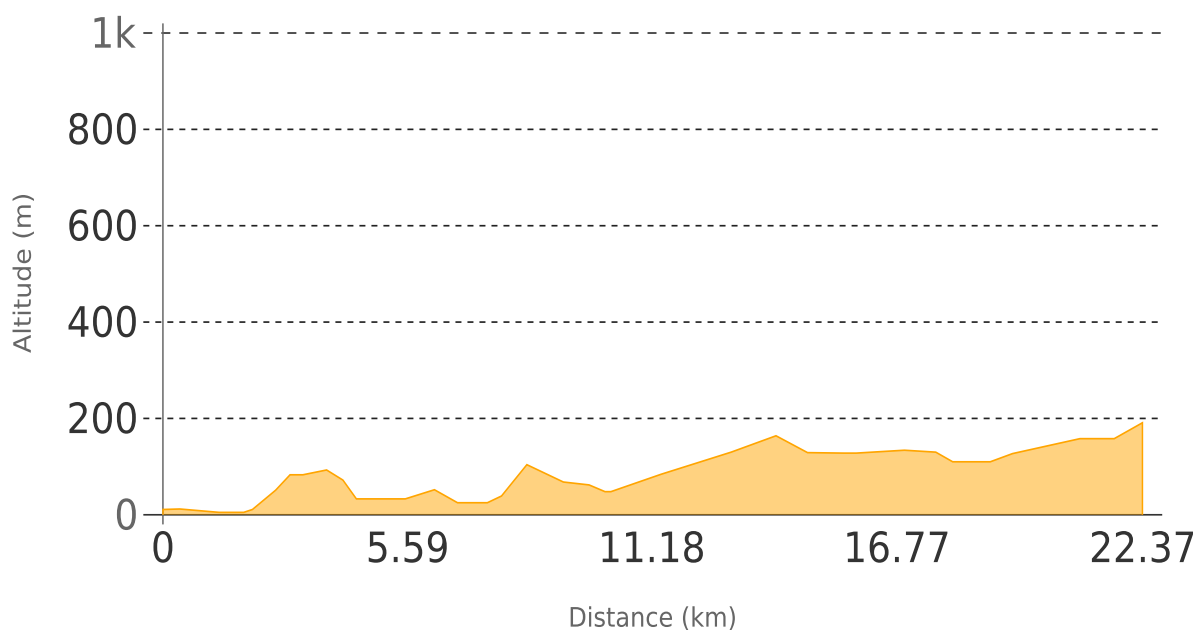
**Signals** First stage of the [SantiaGoToRome!](#) [From Murxia to Dumbria](#). From [Finisterre](#) a road that runs along the long [Langosteira beach](#) leads to a little rough that stretches alternating with asphalted roads !-- pagebreak -->.

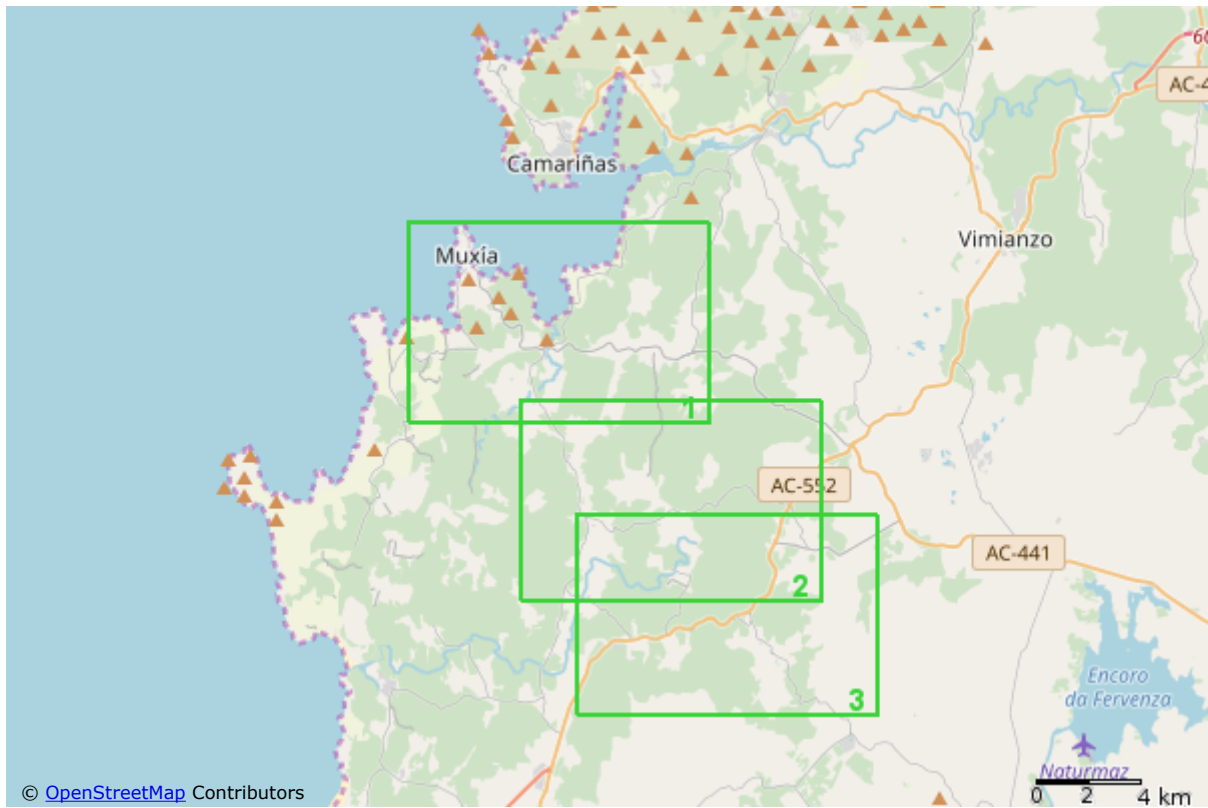
## Description

First stage of the [SantiaGoToRome!](#) **From Murxia to Dumbria**. From **Finisterre** a road that runs along the long **Langosteira beach** leads to a little rough that stretches alternating with asphalted roads.

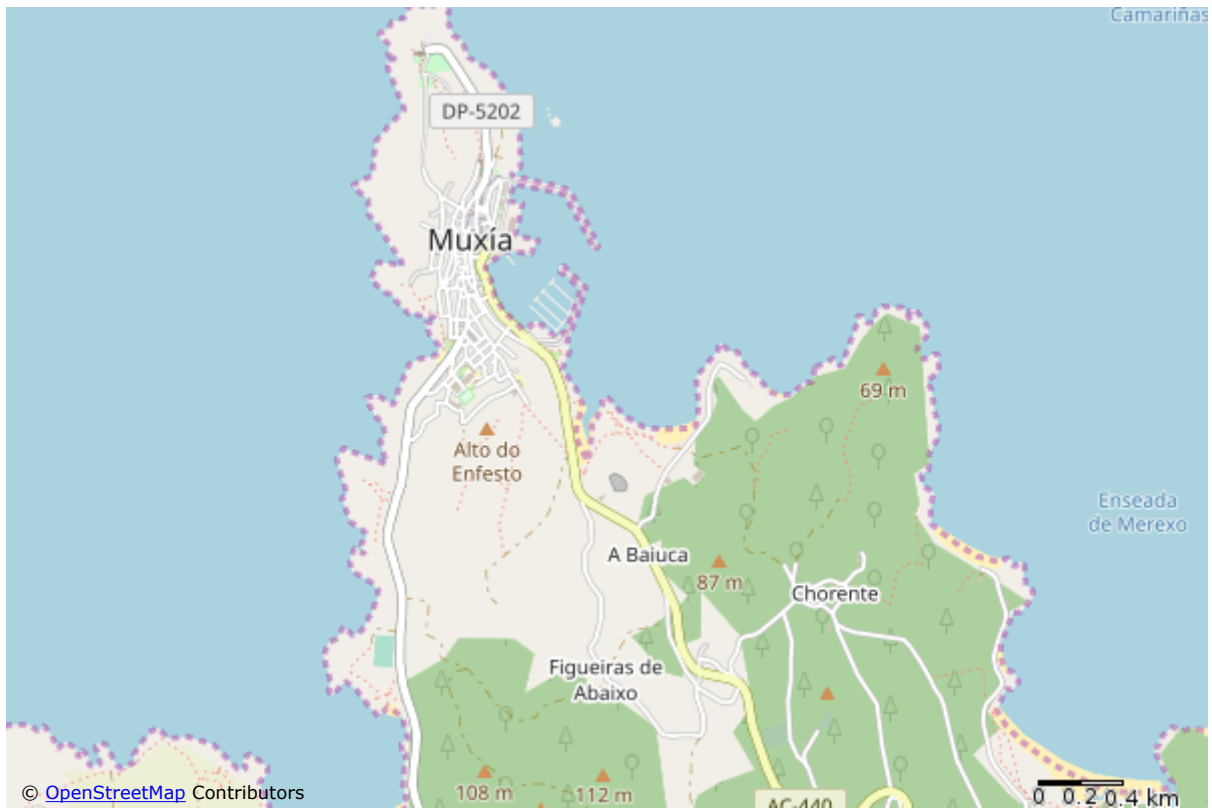
## Elevation

---

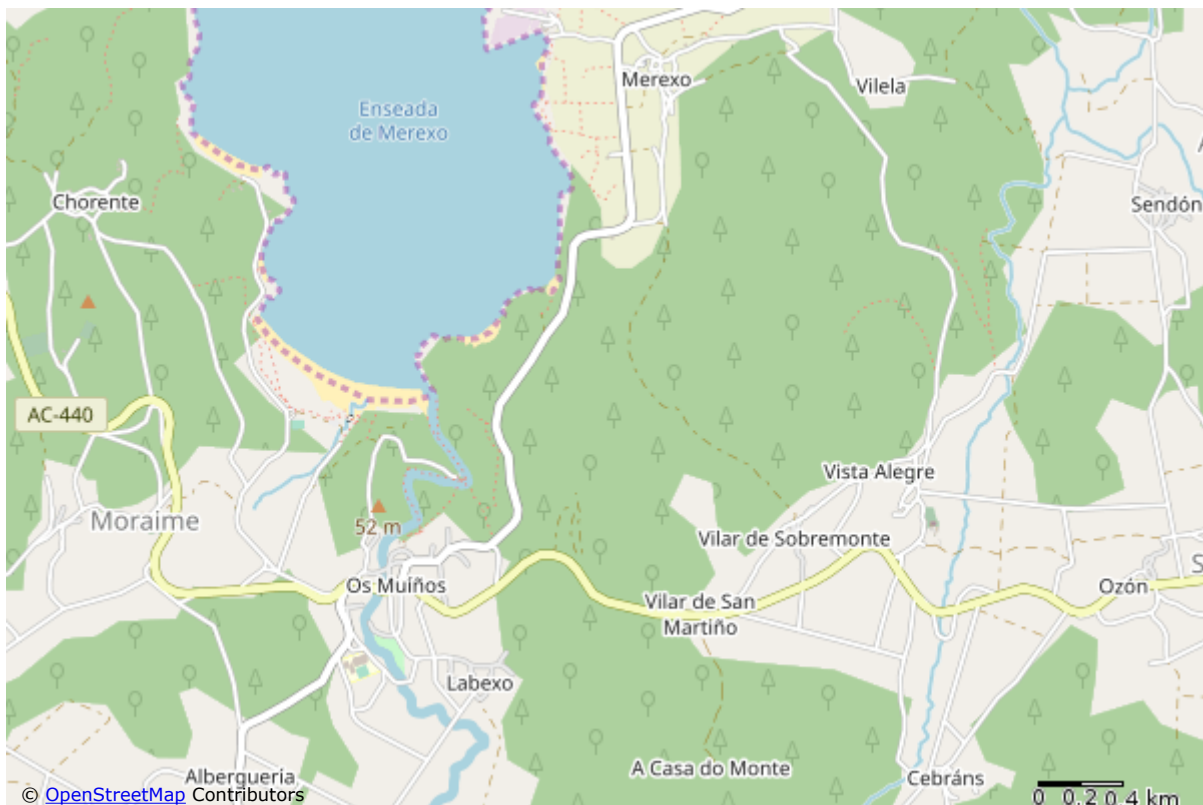




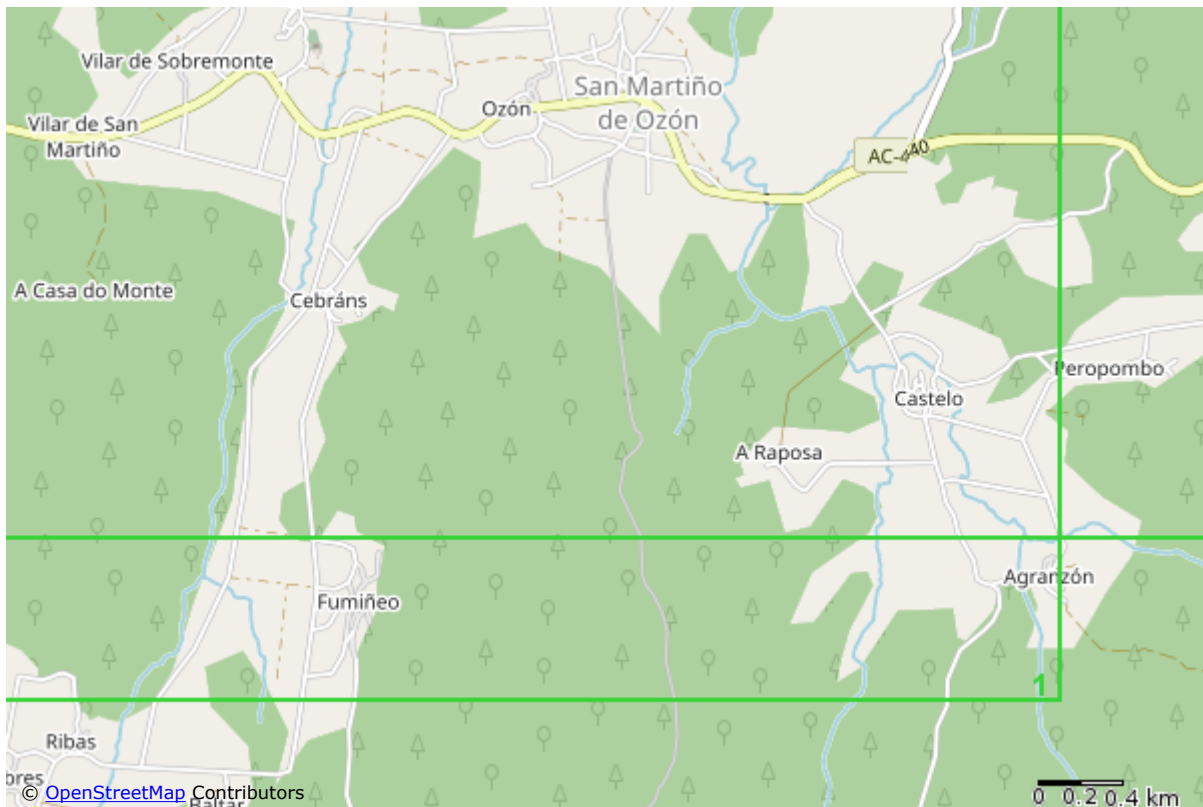
Overview map



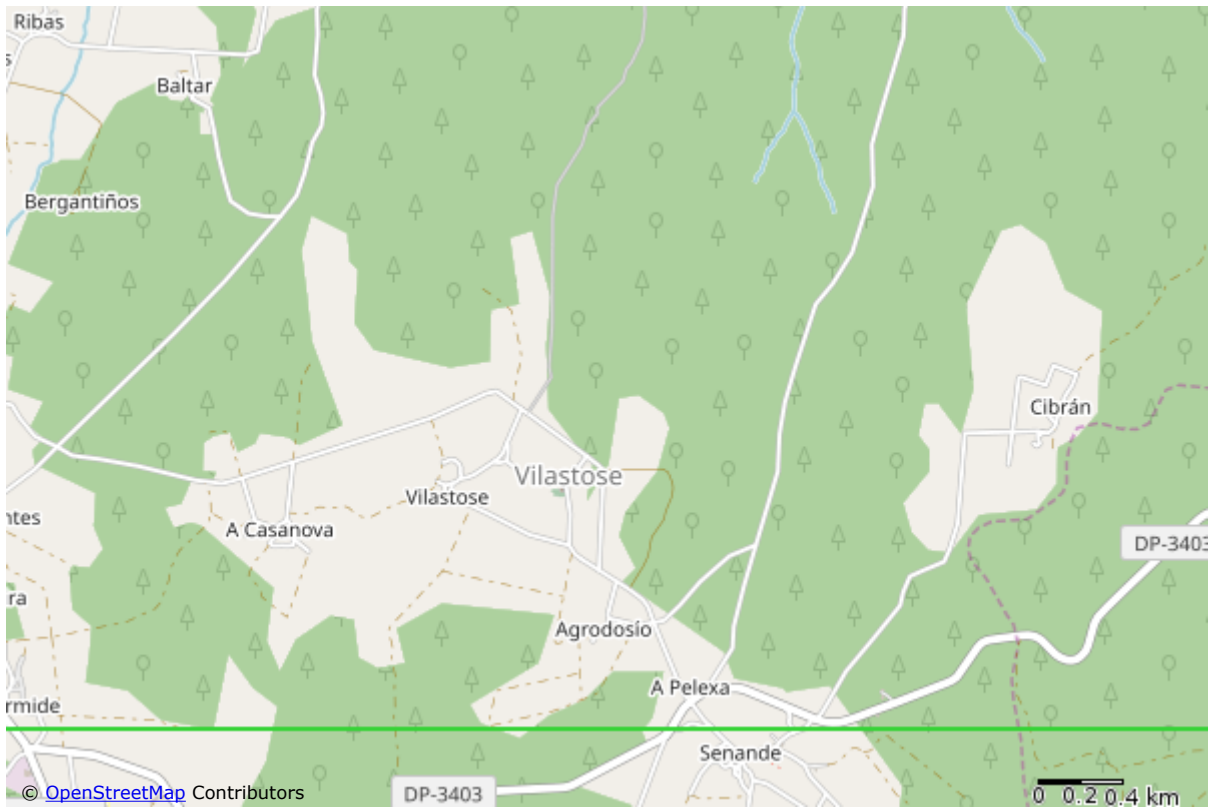
Detail map #1



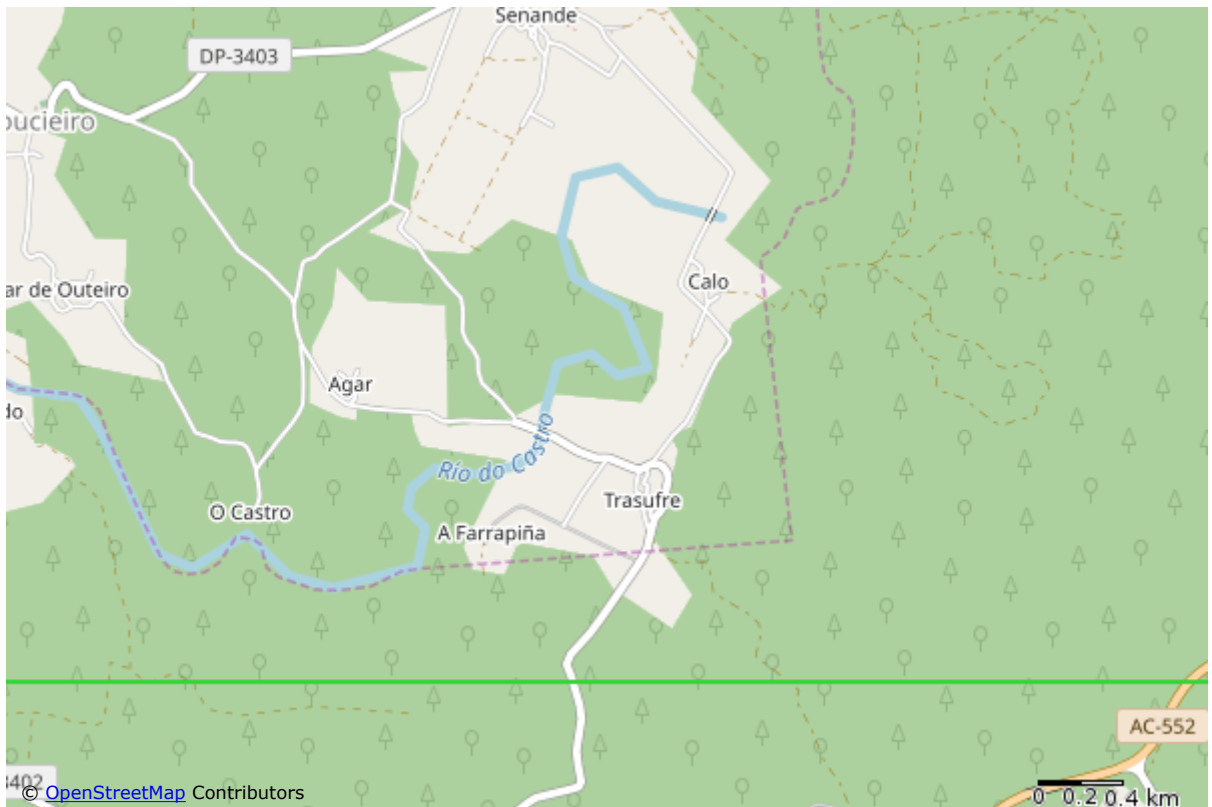
Detail map #2



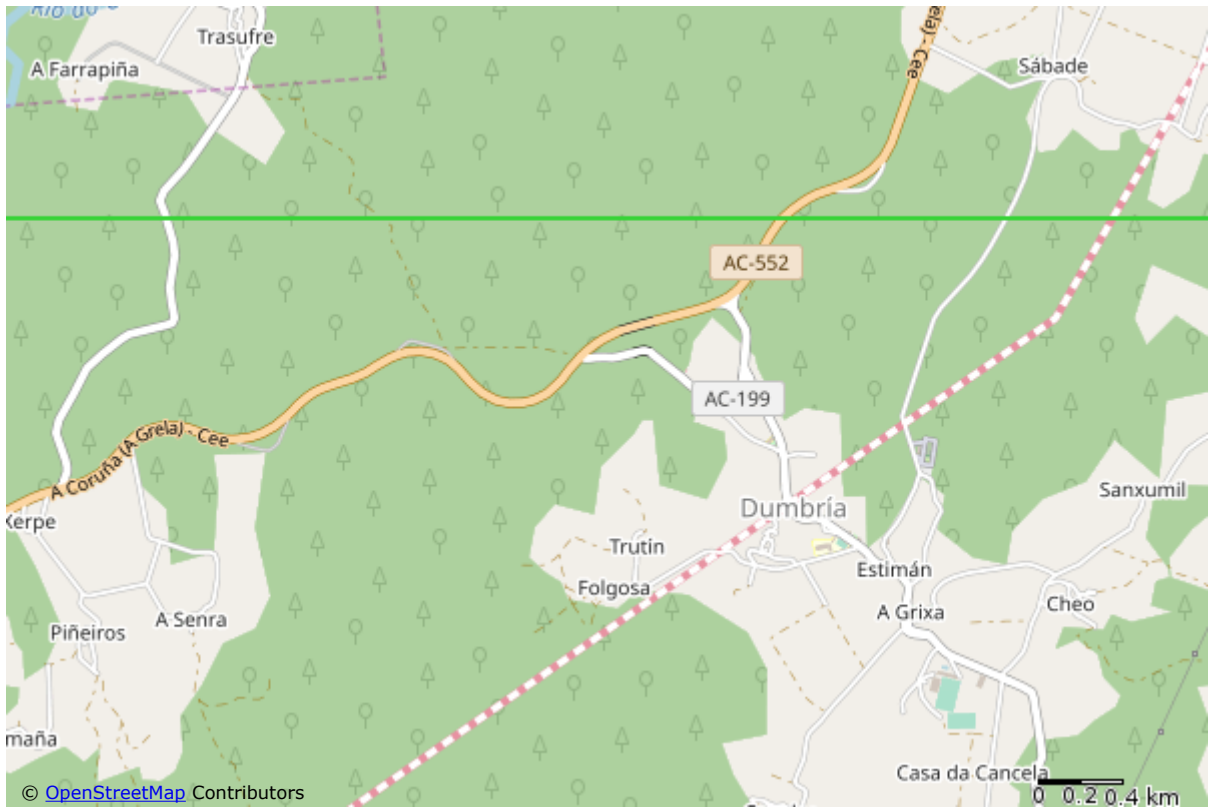
Detail map #3



Detail map #4



Detail map #5



Detail map #6